



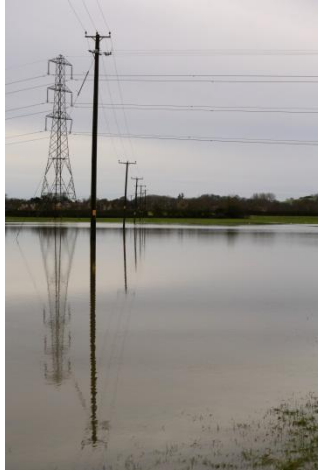
Welcome Developing Christian Malford

30 September 2014



Meeting Agenda

- Introduction
 - Purpose of NDP process
 - Introduce the team
 - Present findings and open discussion
- Challenges in the Development of Christian Malford
 - Wiltshire Council Core Strategy
 - Potential impact on Christian Malford
 - Impact of the Settlement Boundary
- Progress and Initial Results
 - Housing survey
 - Questionnaire
- Open Discussion





Objectives of NDP Process

- Neighbourhood Development Plan (NDP) is a process for communities to have a formal say in the location and type of future developments
- Legal process that, once implemented, county planners must consider in future decision making
- The plan must be consistent with the Core Strategy. We don't have the right to say 'No Development'



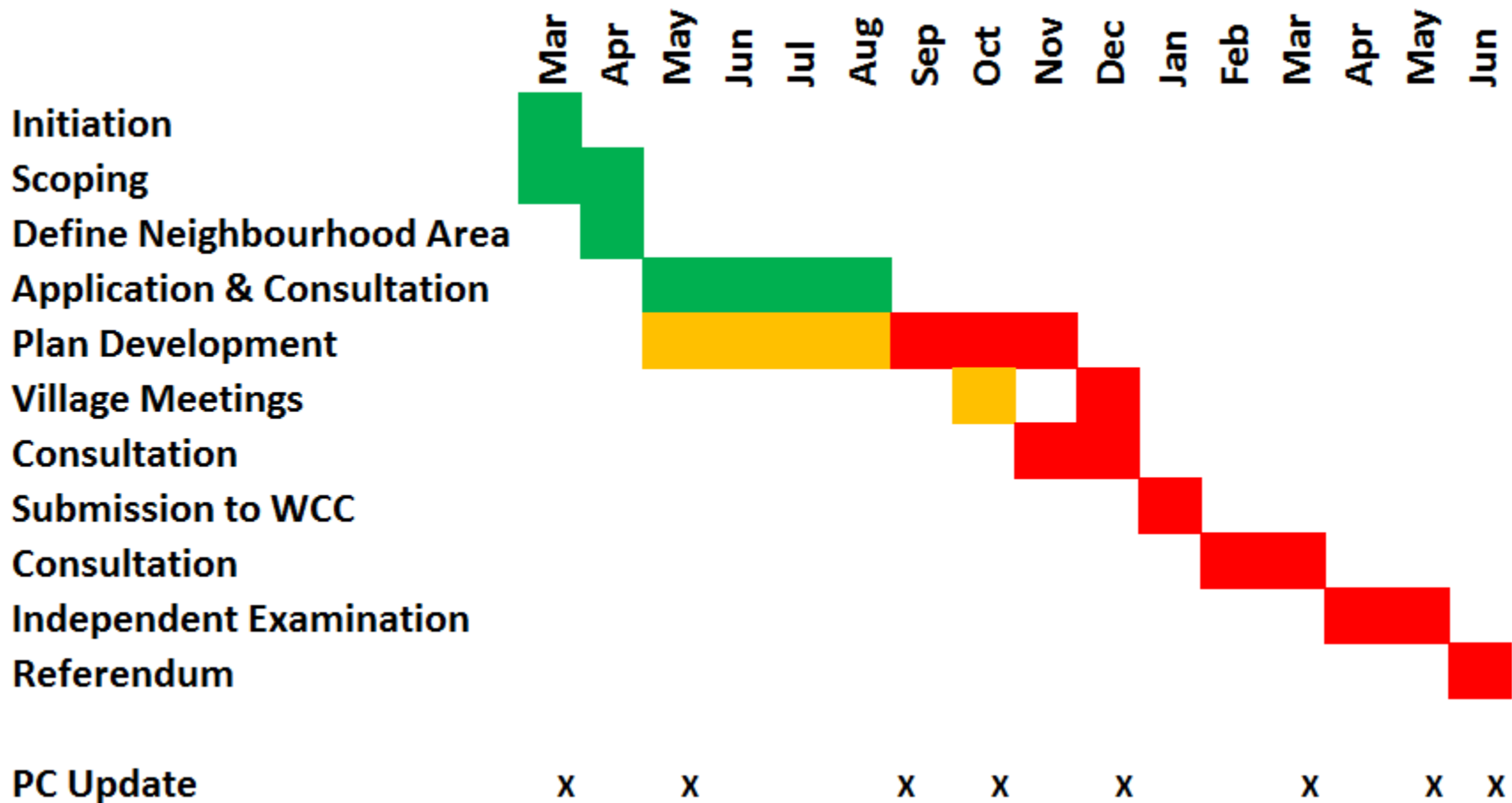
Team Members

- Volunteer team that stepped forward in response to 2013 appeals for help
- The team is a steering committee. We do not make decisions but facilitate the process of formulating a plan



HOUSING 2026

Time Plan





Future Challenges

- Wiltshire is a desirable place to live with reportedly the largest inward movement of people for any county in UK
- Central government requires all county councils to have long term plans to meet the development needs. WCC is developing its Core Strategy to cover the period to 2026
- Christian Malford is a desirable place to live within Wiltshire
- Unless Christian Malford has its own plan it could have developments imposed upon it



WCC Core Strategy

- Aiming to provide opportunities for employment development
- Must provide capacity for 42,000 homes
- Christian Malford has been 'allocated' 34 new homes of which 17 have been built
- 80 additional homes have been allocated to North Wiltshire large villages. Christian Malford may well be allocated a proportion of these.

Industry



CHRISTIAN MALFORD



HOUSING 2026

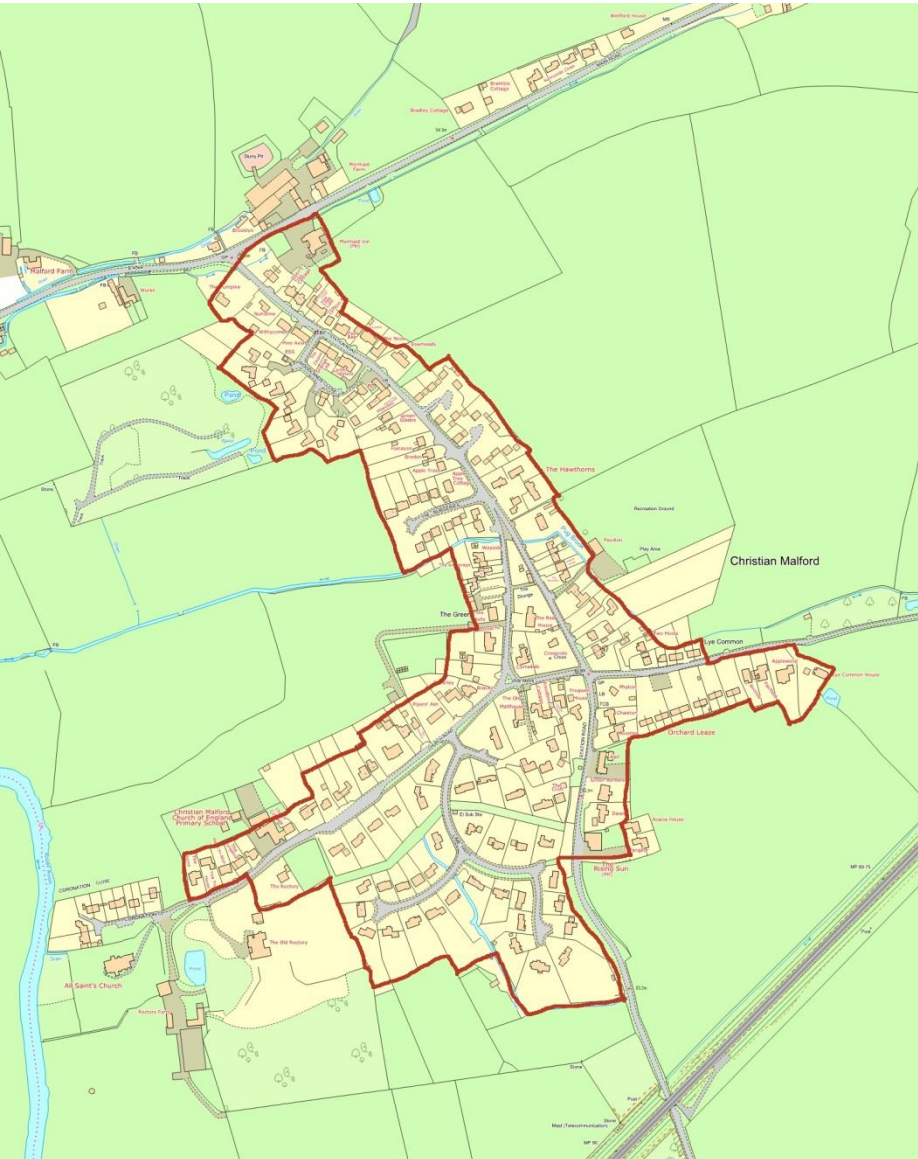


- Is more industry wanted or needed ?
- What industries should be encouraged or discouraged ?
- Where should industries be located ?

Importance of Settlement Area



HOUSING 2026



- Boundary within which development can continue; external development under specific circumstances
- Boundaries being revised by WCC across Wiltshire
- Criteria for expansion not yet released hence importance of Neighbourhood Plan



HOUSING 2026

Acknowledgements



- The Rising Sun
 - For hosting our numerous discussions
- Village Shop
 - For promoting activities and collecting questionnaires



Financial support to enable completion of The Neighbourhood Development plan has been provided by CDF whose support is gratefully acknowledged

- Steering Committee
 - For many, many hours of work